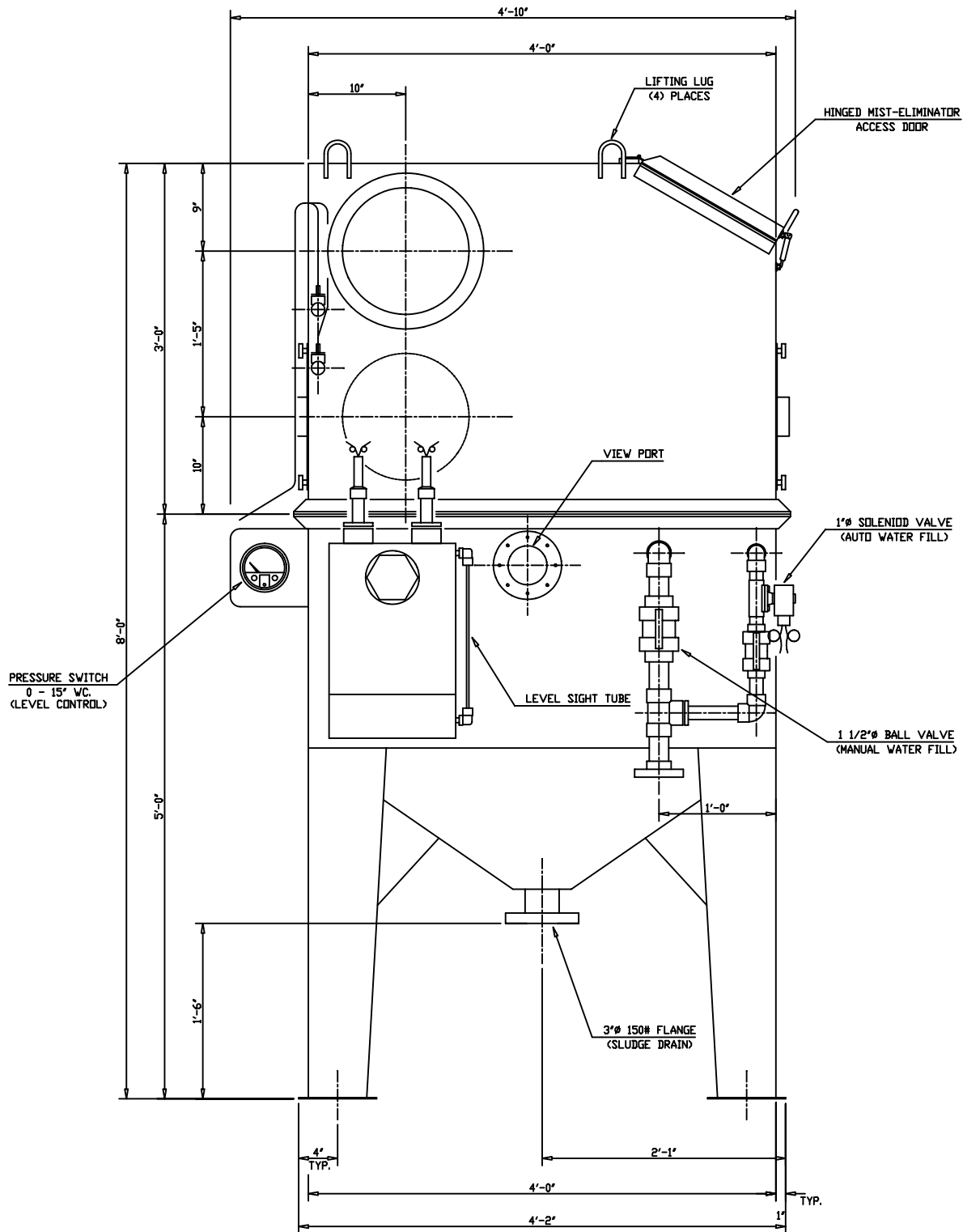


## MODEL 40-H WHIRL WET

3400 - 4200 ACFM OPERATIONAL RANGE  
10 GA. MILD STEEL WELDED CONSTRUCTION  
EPOXY PAINT 'TRI-MER' BLUE

CUSTOMER:	The device depicted and described hereon embodies proprietary information owned by the manufacturer. All design, manufacturing, reproduction, sales and patent rights regarding this device or drawing are reserved except where explicit right is granted in writing. We reserve the right to make design changes.	<div>lev 30</div> <div>THE LOCAL EXHAUST &amp; VENTILATION COMPANY</div> <div>NORTH AMERICA: 888.862.5356, FAX 866.840.9923</div> <div>TORONTO MONTREAL OTTAWA EDMONTON LONDON WINDSOR</div>	1050 Brock Road Pickering, ON L1W 3X4 905.831.7001 E-Mail: Sales@LEV-CO.com		
CUSTOMER PO:			DRAWN BY JMG	TITLE WHIRL/WET MILD STEEL	
PROJECT:			DATE 12/10/02	WW-H400-MS	
ENGINEER:			SCALE NTS	DRAWING NO.: WWMS-001-XX1	
IDENTIFICATION/TAGGING:				Page 2 of 2	



## MODEL 40-H WHIRL WET

3400 - 4200 ACFM OPERATIONAL RANGE  
10 GA. MILD STEEL WELDED CONSTRUCTION  
EPOXY PAINT 'TRI-MER' BLUE

CUSTOMER:  
CUSTOMER PO:  
PROJECT:  
ENGINEER:  
IDENTIFICATION/TAGGING:

The device depicted and described hereon embodies proprietary information owned by the manufacturer. All design, manufacturing, reproduction, sales and patent rights regarding this device or drawing are reserved except where explicit right is granted in writing. We reserve the right to make design changes.

 <b>THE LOCAL EXHAUST &amp; VENTILATION COMPANY</b> NORTH AMERICA: 888.862.5356, FAX 866.840.9923 TORONTO MONTREAL OTTAWA EDMONTON LONDON WINDSOR		1050 Brock Road Pickering, ON L1W 3X4 905.631.7001 E-Mail: Sales@LEV-CO.com
DRAWN BY JMG DATE 12/10/02 SCALE NTS	TITLE WHIRL/WET MILD STEEL WW-H400-MS	
DRAWING NO.: WWMS-002-XX1		Page 1 of 2