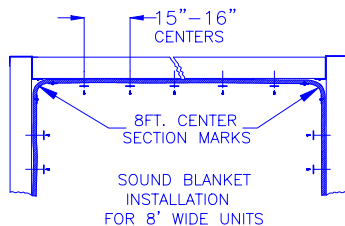
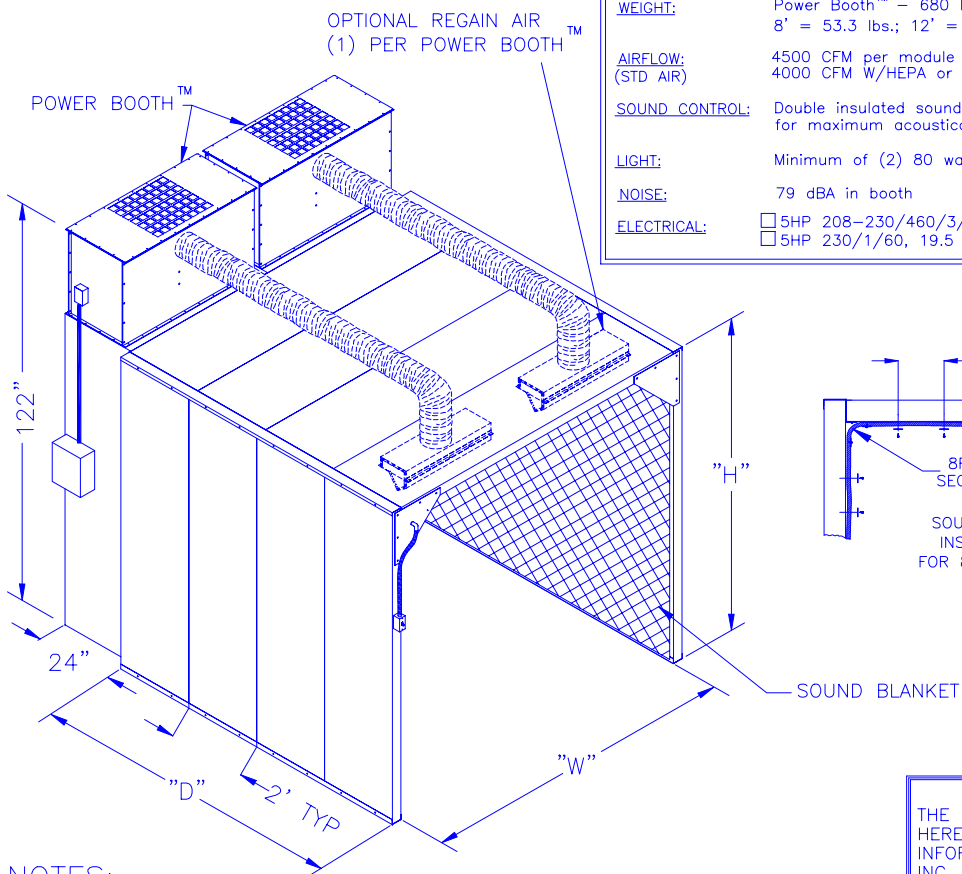


\* 8 FT X 8 FT. X 8 FT. (DCB2)  
BOOTH SHOWN WITH  
REGAIN AIR OPT.



NOTES:

**SPECIFICATIONS:**

**CONSTRUCTION:** POWER BOOTHS™: 16 Ga. welded zinc coated steel cabinet, finished with Powder-Coat finish. Includes removable access panels to filters and motor, a direct drive, ball bearing, B.I. blower, Auto clean Vibra-pulse® filter cleaning system, and an acoustic lined inlet plenum and blower compartment. Motor wired to junction box outside unit. Motor starters/disconnects NOT included.

**ROOF AND SIDE PANELS (Each):** 16 Ga. galvanized steel, 8 feet high, 2 feet wide, and 3 inches deep, with a roof loading of 200 pounds.

**WEIGHT:** Power Booth™ – 680 lbs.; Panels – 6' = 40 lbs.; 8' = 53.3 lbs.; 12' = 80 lbs.; 16' = 106.56 lbs.

**AIRFLOW:** (STD AIR) 4500 CFM per module  
4000 CFM W/HEPA or AD modules

**SOUND CONTROL:** Double insulated sound panels with 3" dead air space behind for maximum acoustical control in work area.

**LIGHT:** Minimum of (2) 80 watt, dust-tight, fluorescent lights.

**NOISE:** 79 dBA in booth

**ELECTRICAL:**  5HP 208-230/460/3/60, 13-12/6.0 amps, std.  
 5HP 230/1/60, 19.5 amps, opt.

**MAIN FILTERS:**  (6) 150 ft<sup>2</sup> CLEAN 2® cartridges, std. (Ea. Power Booth™)  
 (6) 75 ft<sup>2</sup> Fiber Dust® cartridges, opt.  
 (6) Spunbond cartridges, opt.

**AFTER FILTERS:**  (2) HEPA filters, 99.97%, opt. (Ea. Power Booth™) NOT available with Regain

**AD OPTION:**  (4) 25 lb. adsorber modules, refillable. (Ea. Power Booth™) NOT available with Regain

**OTHER OPTIONS:**  Pressure gauge kit. Indicates filter changes.  
 Welding Application, + (6) UltraClean-Plus filters.  
 Manual clean in place of Auto clean Vibra-pulse®.  
 Push/pull airflow using Regain Air.

**FIRE SUPPRESSION:** Equipment provided by others.

| UNIT | W   | D  | H  | QTY OF TOP PANELS | QTY OF POWER BOOTHS |
|------|-----|----|----|-------------------|---------------------|
| DCB1 | 6'  | 8' | 8' | (4) 6' LONG       | 1                   |
| DCB2 | 8'  | 8' | 8' | (4) 8' LONG       | 2                   |
| DCB3 | 12' | 8' | 8' | (8) 6' LONG       | 3                   |
| DCB4 | 16' | 8' | 8' | (8) 8' LONG       | 4                   |

THE DEVICE DEPICTED AND DESCRIBED HEREON EMBODIES PROPRIETARY INFORMATION OWNED BY AIRFLOW SYSTEMS, INC. ALL DESIGN, MANUFACTURING, REPRODUCTION, SALES, AND PATENT RIGHTS REGARDING THIS DEVICE OR DRAWING ARE RESERVED EXCEPT WHERE EXPLICIT RIGHT IS GRANTED IN WRITING.

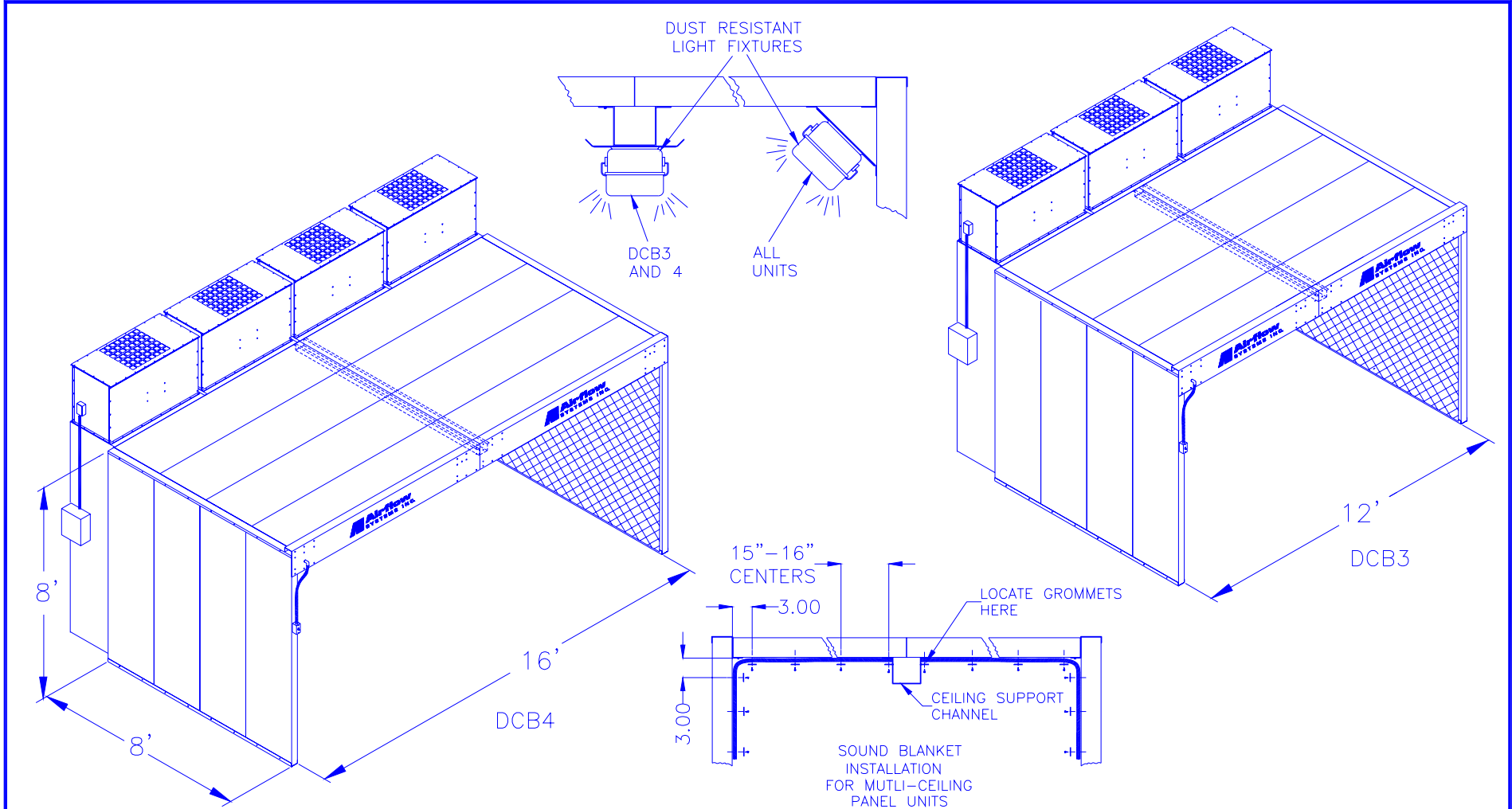


For more information, please contact:  
**LEV-CO**  
1.888.862.5356  
www.lev-co.com

DRAWN BY  
JRS  
DATE  
10-3-00  
SCALE  
NTS

TITLE  
DUST CONTROL BOOTH™  
PAGE 1 OF 2

DRAWING NO.: DCBSPEC (81-2870/B)



NOTES:

THE DEVICE DEPICTED AND DESCRIBED HEREON EMBODIES PROPRIETARY INFORMATION OWNED BY AIRFLOW SYSTEMS, INC. ALL DESIGN, MANUFACTURING, REPRODUCTION, SALES, AND PATENT RIGHTS REGARDING THIS DEVICE OR DRAWING ARE RESERVED EXCEPT WHERE EXPLICIT RIGHT IS GRANTED IN WRITING.



For more information, please contact:  
**LEV-CO**  
 1.888.862.5356  
 www.lev-co.com

DRAWN BY  
 JRS  
 DATE  
 10-3-00  
 SCALE  
 NTS

TITLE  
 DUST CONTROL BOOTH™  
 PAGE 2 OF 2  
 DRAWING NO.: DCBSPEC (81-2870/B)