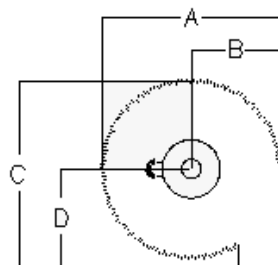
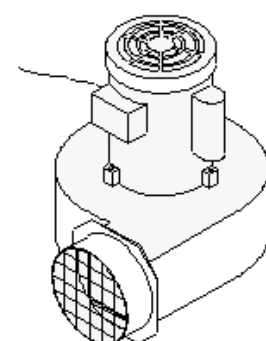
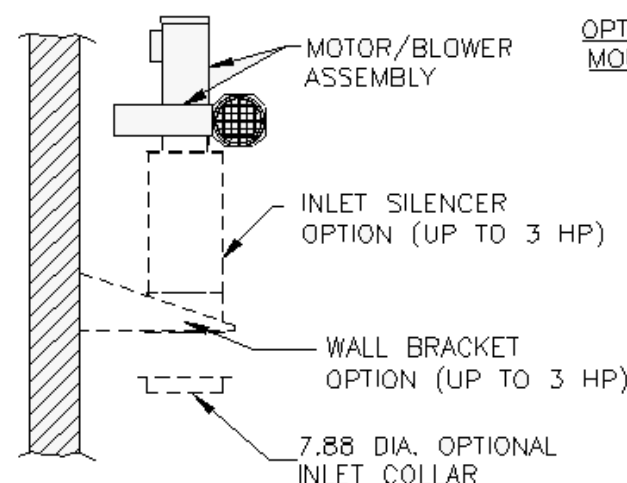
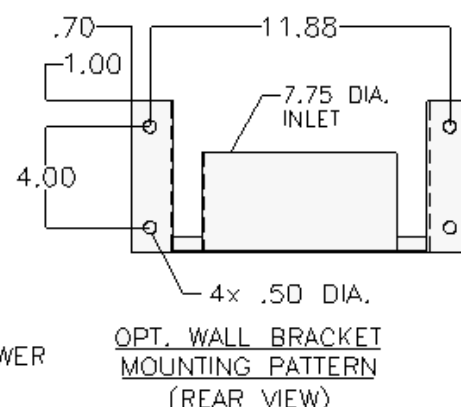
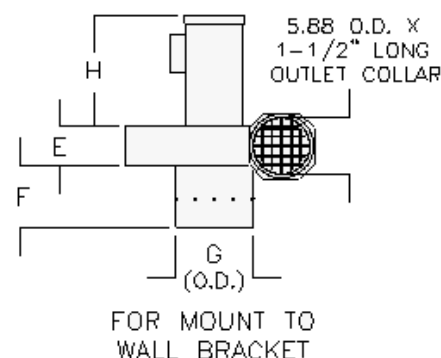


BLOWERS	A	B	C	D	E	F	G
BM07	16.78	8.88	16.00	7.63	5.00	6.50	8.15
BM08	13.48	7.60	12.17	5.45	4.65	4.65	*
BM08 BI BM09 BM10	16.78	8.88	16.00	7.63	5.00	6.50	8.15

*Inlet plate on bottom of ring mounts to the 4" arm wall bracket.



MOTORS	H
1/2 HP	9.50
3/4 HP	10.00
1 HP	11.50
1.5 HP	11.50



TYPICAL VIEW

SPECIFICATIONS:

☐ **BM07 BI:** 1/2 HP, C-flange, ball bearing motor with an AMCA type B spark resistant aluminum B.I. wheel. 115/208-230/1/60, 7/3.5-3.4 amps 208-230/460/3/60, 1.7-1.6/.8 amps Outlet dBA: dBA

☐ **BM08:** 3/4 HP C-flange, ball bearing motor with a forward curve steel wheel and a 1.25 safety factor. * FOR 4" ARM 115/208-230/1/60, 10/5.2-5.0 amps 208-230/460/3/60, 2.5-2.4/1.2 amps Outlet dBA: 80 dBA

☐ **BM08 BI:** 3/4 HP C-flange, ball bearing motor with an AMCA type B spark resistant aluminum B.I. wheel. 115/208-230/1/60, 10/5.2-5.0 amps 208-230/460/3/60, 2.5-2.4/1.2 amps Outlet dBA: 80 dBA

FIRE SUPPRESSION: Equipment provided by others.

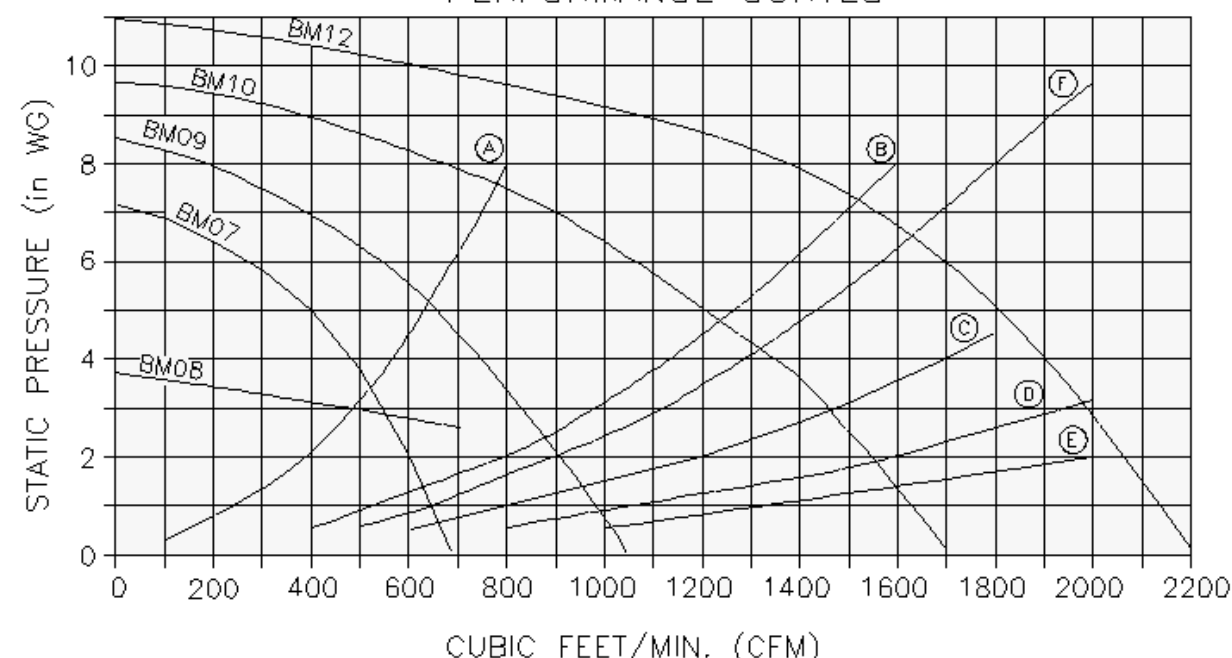
☐ **BM09 BI:** 1 HP C-flange, ball bearing motor, 1.25 safety factor, with an AMCA type B spark resistant aluminum B.I. wheel. 115/208-230/1/60, 12.0/6.2-6.0 amps 208-230/460/3/60, 3.4-3.2/1.6 amps Outlet dBA: 88 dBA

☐ **BM10 BI:** 1.5 HP C-flange, ball bearing motor, 1.25 safety factor, with an AMCA type B spark resistant aluminum B.I. wheel. 115/208-230/1/60, 15.0/7.9-7.5 amps 208-230/460/3/60, 4.9-4.6/2.3 amps (50 HZ available) Outlet dBA: 88 dBA

OPTIONS:

- ☐ Silencer mounted on outlet (reduces noise from motor/blower; 10 dBA average Reduction)
- ☐ Silencer mounted on inlet (reduces noise at hood) Average 3 dBA Reduction
- ☐ Wall bracket

PERFORMANCE CURVES



A = (1)8' 4" E-Z ARM® II
B = (2)8' 4" E-Z ARM® II
C = (3)8' 4" E-Z ARM® II
D = (4)8' 4" E-Z ARM® II
E = (5)8' 4" E-Z ARM® II
F = (1) 10' E-Z ARM®

NOTES:

ITEMS DESIGNATED AS ☒ ARE INCLUDED IN THIS PROPOSAL.

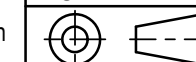
CUSTOMER:
CUSTOMER P.O.:
PROJECT:
ENGINEER:
SALES REP.:
IDENTIFICATION / TAGGING:

> www.lev-co.com • 1.888.862.5356

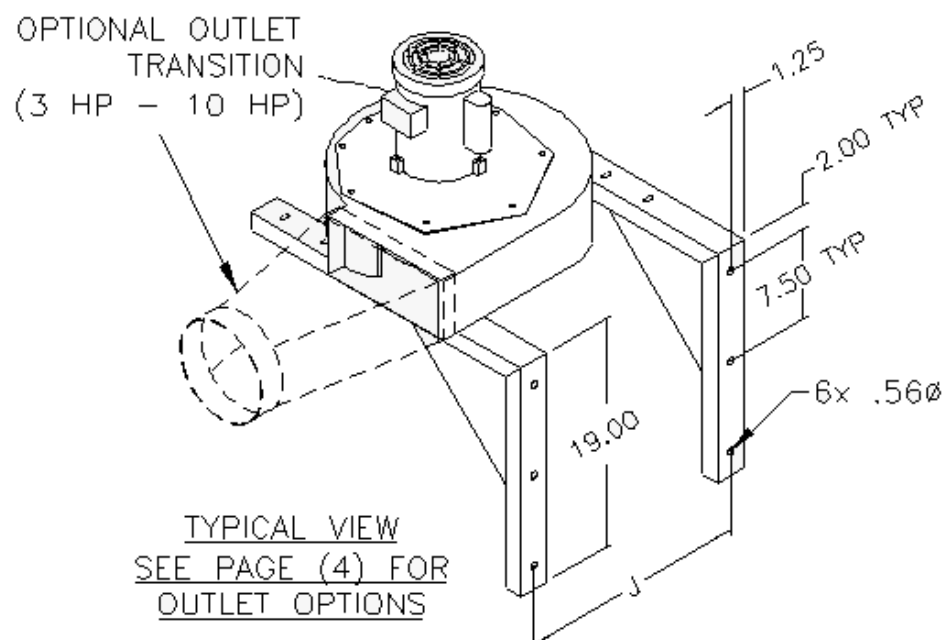
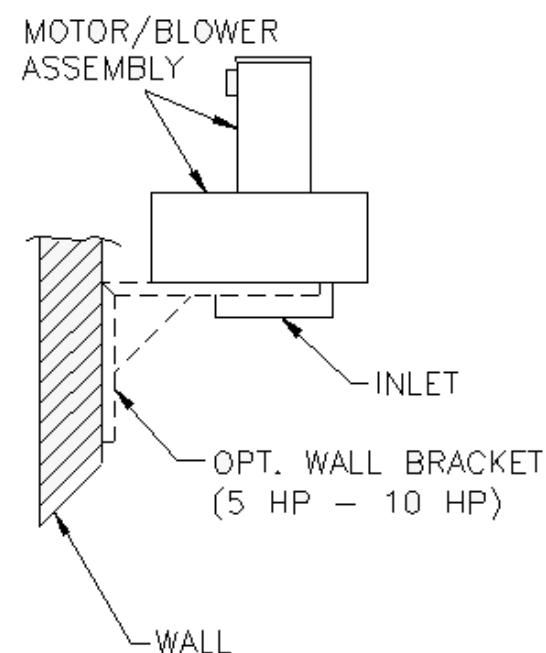
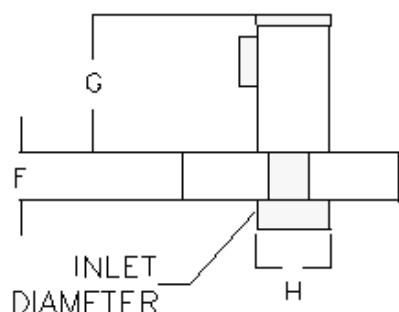
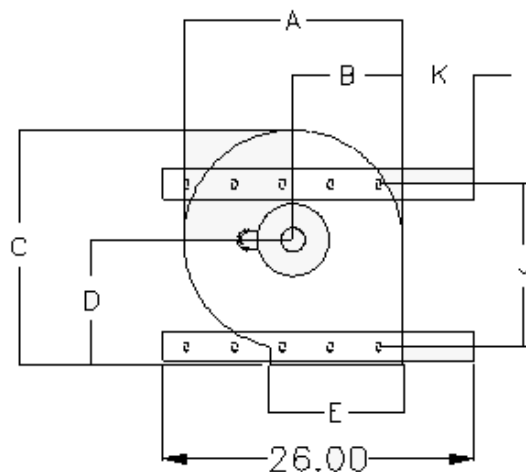
lev-co

The device depicted and described hereon embodies proprietary information owned by the manufacturer. All design, manufacturing, reproduction, sales and patent rights regarding this device or drawing reserved except where explicit right is guaranteed in writing. We reserve the right to make design changes.

Drawn by: Janos B
Date: 6/18/2014
Scale: NTS
Weight: N/A



**13-025 AFS
DIRECT DRIVE FANS**
Specification Drawing
Drawing No.: -
Material: -
File Name: (13-025) AFS Direct Drive fans - SD
Sheet: 1/5



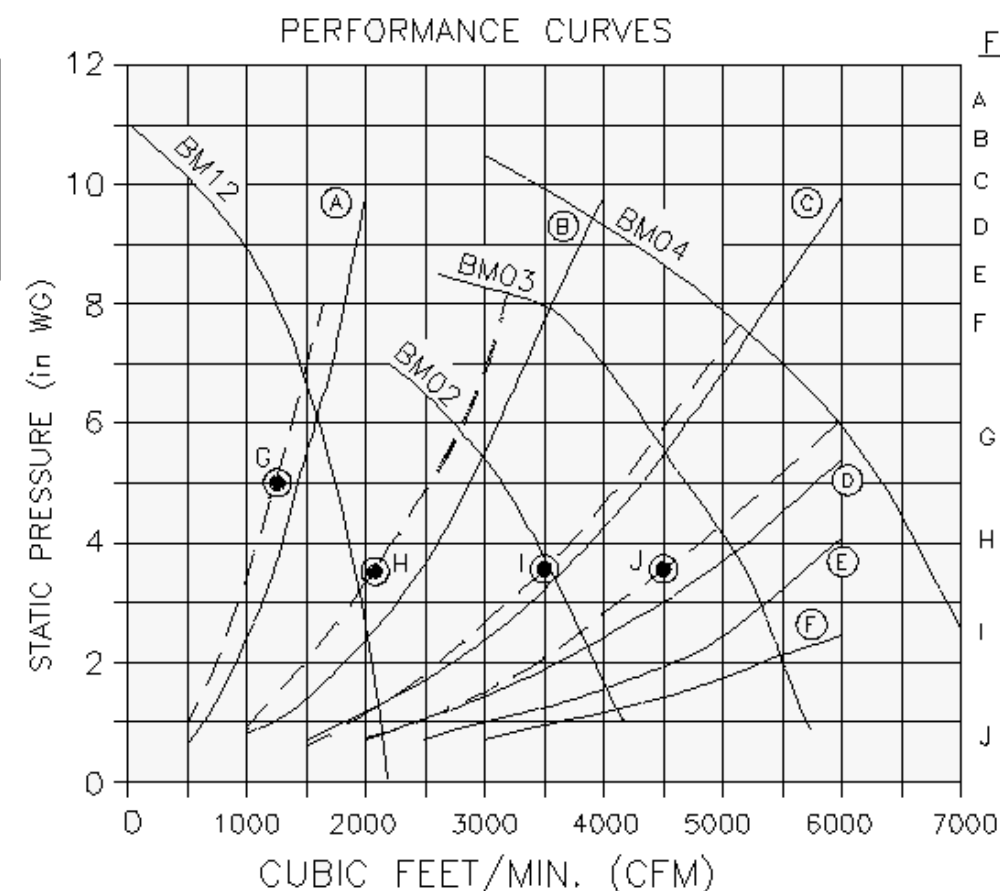
SPECIFICATIONS:

- ☐ **BM12:** 3 HP C-flange, ball bearing motor, 1.25 safety factor, with an AMCA type B spark resistant aluminum B.I. wheel. 208-230/460/3/60, 8.4-7.6/3.8 amps
- ☐ **BM02:** 5 HP C-flange, ball bearing motor, 1.25 safety factor, Steel B.I. wheel. 208-230/460/3/60, 12.8-12.0/6.0 amps
- ☐ **BM03:** 7.5 HP C-flange, ball bearing motor, 1.25 safety factor, Steel B.I. wheel. 208-230/460/3/60, 18.5-17.4/8.7 amps

FIRE SUPPRESSION: Equipment provided by others.

- ☐ **BM04:** 10 HP C-flange, ball bearing motor, 1.25 safety factor, Aluminum B.I. wheel, high flow. 208-230/460/3/60, 25.9-23.6/11.8 amps
- NOISE:**
 - 3 HP, B.I. - 90 dBA / 78 dBA with silencer or duct
 - 5 HP, B.I. - 84 dBA / 75 dBA with silencer or duct
 - 7.5 HP, B.I. - 84 dBA / 75 dBA with silencer or duct
 - 10 HP, B.I. - 89 dBA / 78 dBA with silencer or duct
- OPTIONS:**
 - ☐ Wall bracket
 - ☐ Silencer mounted on outlet. (reduces noise from motor/blower)
 - ☐ 50 Hz motor

	A	B	C	D	E	F	G	H	J	K	Hard-ware
BM12	18.77	9.88	18.56	9.25	8.06	7.00	11.30	8.13	15.00	6.13	6
BM02	23.25	13.13	23.50	11.88	13.25	9.63	13.93	12.00	19.00	6.00	7
BM03	25.75	14.50	24.00	11.31	14.63	10.75	15.44	14.00	20.00	6.00	8
BM04	28.44	15.81	27.06	12.00	16.75	11.38	14.00	14.00	22.50	6.00	8



FUME EXHAUST

- A = (1) E-Z ARM
- B = (2) E-Z ARMS
- C = (3) E-Z ARMS
- D = (4) E-Z ARMS
- E = (5) E-Z ARMS
- F = (6) E-Z ARMS

VES

- G = (8) 3" @ 150 CFM EA.
- H = (6) 4.5" @ 350 CFM EA.
- I = (10) 4.5" @ 350 CFM EA.
- J = (7) 6" @ 650 CFM EA.

NOTES:

ITEMS DESIGNATED AS ☒ ARE INCLUDED IN THIS PROPOSAL.

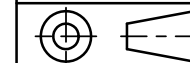
CUSTOMER:
CUSTOMER P.O.:
PROJECT:
ENGINEER:
SALES REP.:
IDENTIFICATION / TAGGING:

> www.lev-co.com • 1.888.862.5356

lev-co

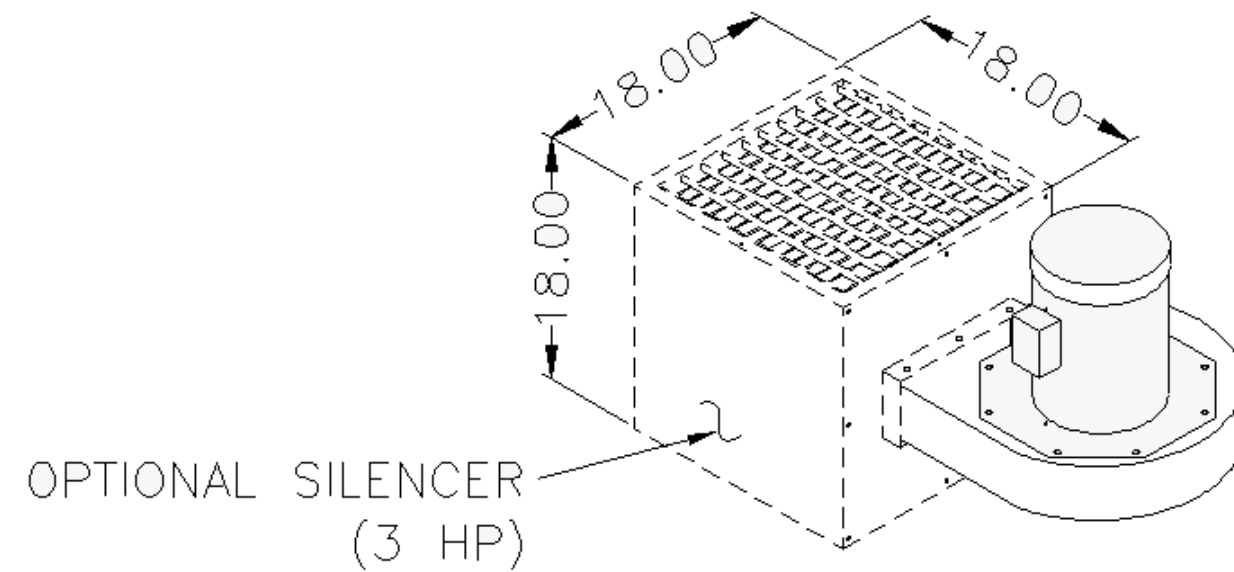
The device depicted and described hereon embodies proprietary information owned by the manufacturer. All design, manufacturing, reproduction, sales and patent rights regarding this device or drawing reserved except where explicit right is guaranteed in writing. We reserve the right to make design changes.

Drawn by: Janos B
Date: 6/18/2014
Scale: NTS
Weight: N/A

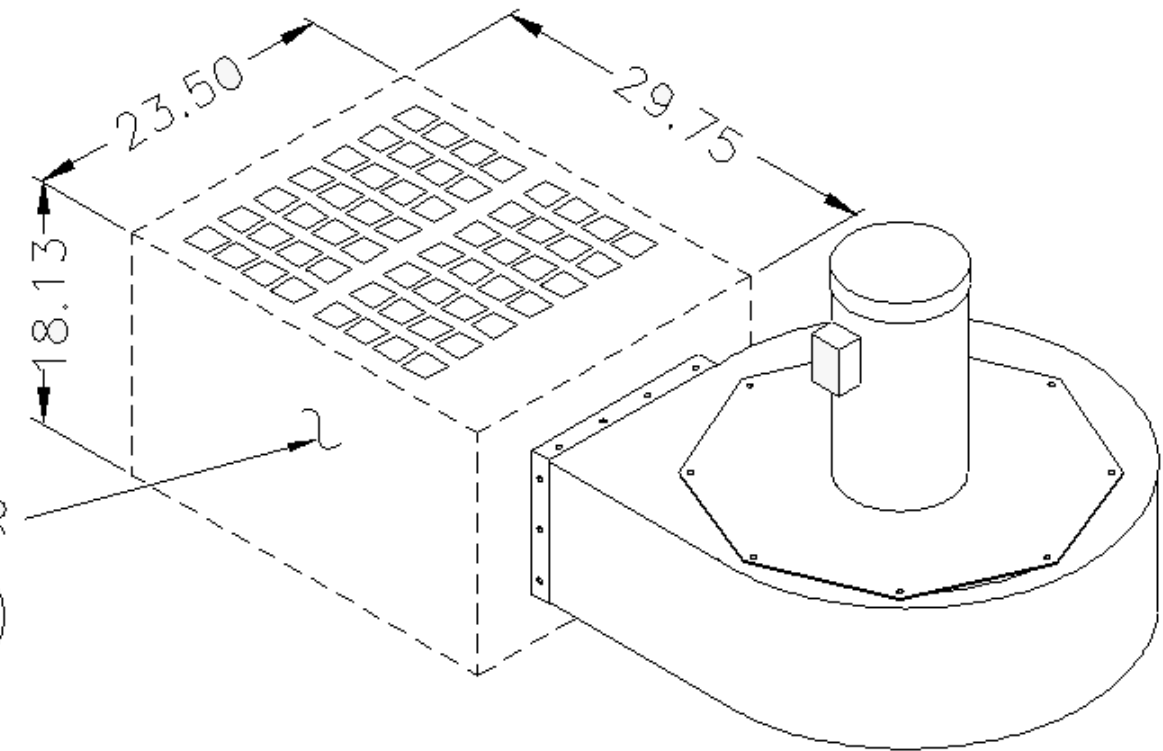


Drawing No.: -
Material: -
File Name: (13-025) AFS Direct Drive fans - SD
Sheet: 2/5

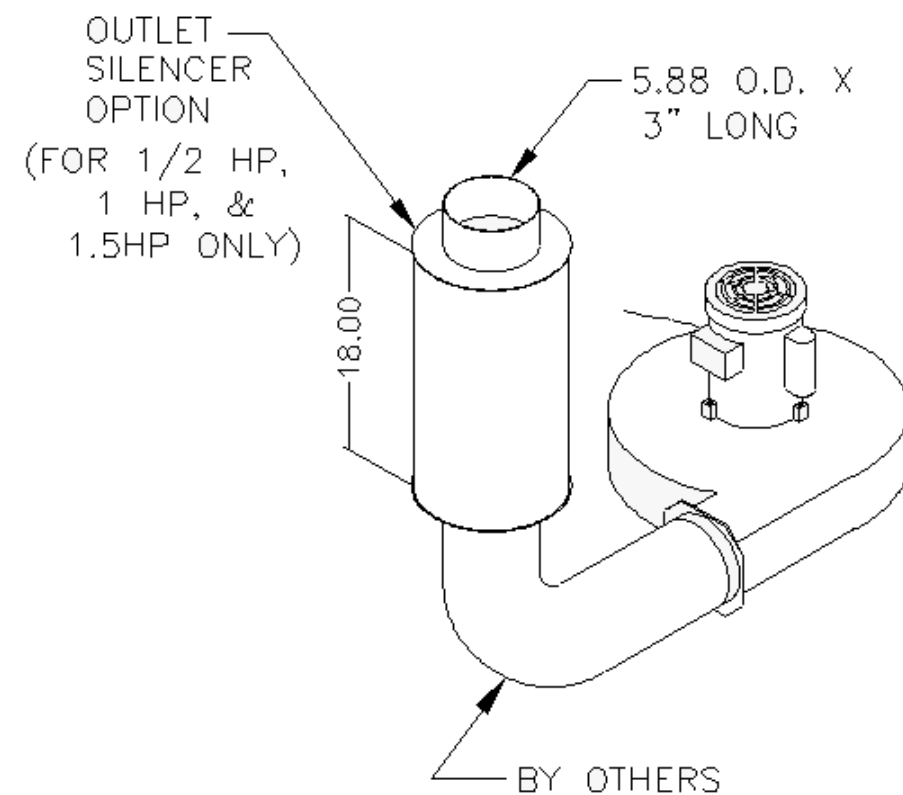
**13-025 AFS
DIRECT DRIVE FANS**
Specification Drawing



OPTIONAL SILENCER
(3 HP)



OPTIONAL SILENCER
(5, 7.5, & 10HP
B.I. BLOWERS)



OUTLET
SILENCER
OPTION
(FOR 1/2 HP,
1 HP, &
1.5HP ONLY)

5.88 O.D. X
3" LONG

18.00

BY OTHERS

NOTES:

ITEMS DESIGNATED AS ☒ ARE INCLUDED IN THIS PROPOSAL.

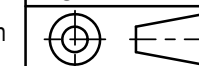
CUSTOMER:
CUSTOMER P.O.:
PROJECT:
ENGINEER:
SALES REP.:
IDENTIFICATION / TAGGING:

> www.lev-co.com • 1.888.862.5356

lev-co

The device depicted and described hereon embodies proprietary information owned by the manufacturer. All design, manufacturing, reproduction, sales and patent rights regarding this device or drawing reserved except where explicit right is guaranteed in writing. We reserve the right to make design changes.

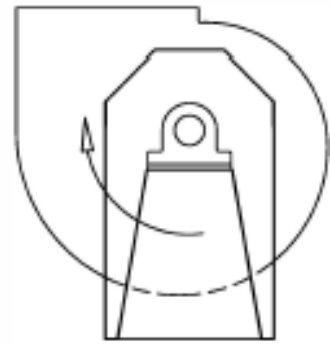
Drawn by: Janos B
Date: 6/18/2014
Scale: NTS
Weight: N/A



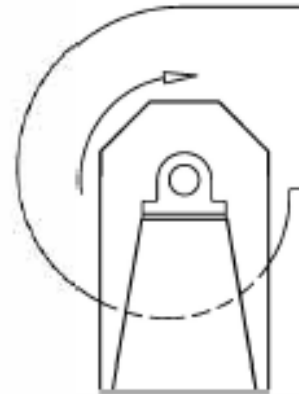
**13-025 AFS
DIRECT DRIVE FANS**
Specification Drawing

Drawing No.: - File Name: (13-025) AFS Direct Drive fans - SD
Material: - Sheet: 3/5

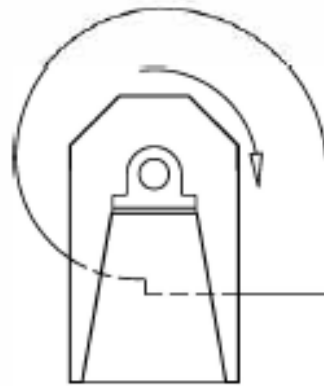
CLOCKWISE ROTATION



CLOCKWISE
UP BLAST



CLOCKWISE
TOP HORIZONTAL

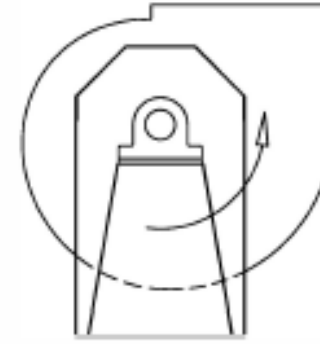


CLOCKWISE
DOWN BLAST

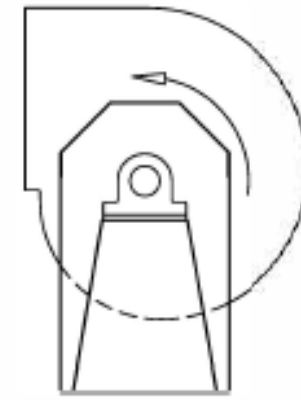


CLOCKWISE
BOTTOM HORIZONTAL

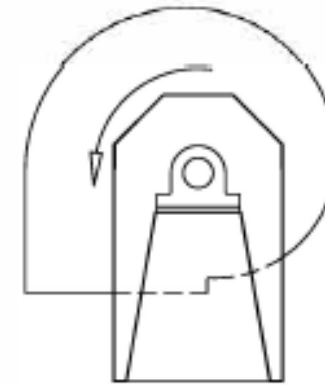
COUNTERCLOCKWISE ROTATION



COUNTERCLOCKWISE
UP BLAST



COUNTERCLOCKWISE
TOP HORIZONTAL



COUNTERCLOCKWISE
DOWN BLAST



COUNTERCLOCKWISE
BOTTOM HORIZONTAL

NOTES:

1. DIRECTION OF ROTATION IS DETERMINED FROM DRIVE SIDE OF FAN.
2. SAME AS AMCA STANDARD 99-2406
3. LEV-CO FANS ARE ASSEMBLED IN CLOCKWISE TOP HORIZONTAL ORIENTATION UNLESS OTHERWISE SPECIFIED

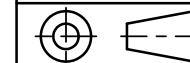
CUSTOMER:
CUSTOMER P.O.:
PROJECT:
ENGINEER:
SALES REP.:
IDENTIFICATION / TAGGING:

> www.lev-co.com • 1.888.862.5356

lev-co

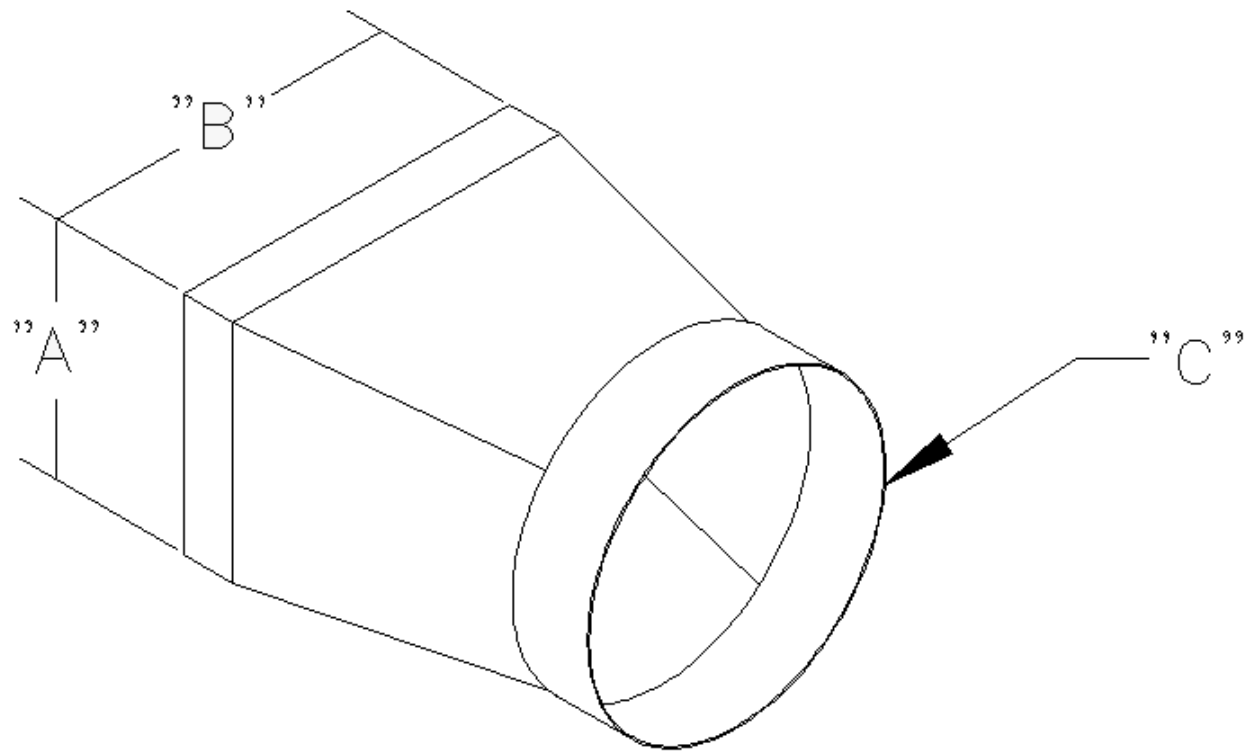
The device depicted and described hereon embodies proprietary information owned by the manufacturer. All design, manufacturing, reproduction, sales and patent rights regarding this device or drawing reserved except where explicit right is guaranteed in writing. We reserve the right to make design changes.

Drawn by: Janos B
Date: 6/18/2014
Scale: NTS
Weight: N/A



**13-025 AFS
DIRECT DRIVE FANS**
Specification Drawing

Drawing No.: -
Material: -
File Name: (13-025) AFS Direct Drive fans - SD
Sheet: 4/5



TRANSITION SIZE CHART

MOTOR/ BLOWER	PART NUMBER	"A" (I.D)	"B" (I.D)	"C" (DIAMETER)
3HP B.I.	1BH1-3808	7.06"	8.17"	9.88" DIA.(O.D)
5HP B.I.	2HD0-8703	9.88"	13.63"	11.88" DIA.(O.D)
7.5HP B.I.	2HD0-8704	11.00"	14.75"	13.88" DIA.(O.D)
10HP B.I.	2HD0-8705	11.50"	16.88"	13.88" DIA.(O.D)

NOTES:

ITEMS DESIGNATED AS ☒ ARE INCLUDED IN THIS PROPOSAL.

MODELS & OPTIONS:

Main System / Part	Part #	Description
<input type="checkbox"/>	BM02-1	5HP, BI Blower Assembly,208-230/460V
<input type="checkbox"/>	BM02-2	5HP, BI Blower Assembly 575v
<input type="checkbox"/>	BM03-1	7.5HP, BI Blower Assembly,208-230/460v
<input type="checkbox"/>	BM03-2	7.5HP, BI Blower Assembly 575v
<input type="checkbox"/>	BM04-1	10HP, BI Blower Assembly,208-230/460v
<input type="checkbox"/>	BM04-2	10HP, BI Blower Assembly 575v
<input type="checkbox"/>	BM09-1	1Hp,115/230/1/60 w/radial blower
<input type="checkbox"/>	BM12-1	3HP High Pressure Motor/Blower, 208-230/460v
<input type="checkbox"/>	BM14-1	5HP High Pressure Motor/Blower, 208-230/460v
<input type="checkbox"/>	BM14-2	5HP High Pressure Motor/Blower, 575v

CUSTOMER:

CUSTOMER P.O.:

PROJECT:

ENGINEER:

SALES REP.:

IDENTIFICATION / TAGGING:

www.lev-co.com • 1.888.862.5356



The device depicted and described hereon embodies proprietary information owned by the manufacturer. All design, manufacturing, reproduction, sales and patent rights regarding this device or drawing reserved except where explicit right is guaranteed in writing. We reserve the right to make design changes.

Drawn by: Janos B

Date: 6/18/2014

Scale: NTS

Weight: N/A

13-025 AFS

DIRECT DRIVE FANS

Specification Drawing

Drawing No.: -

File Name: (13-025) AFS Direct Drive fans - SD

Material: -

Sheet: 5/5