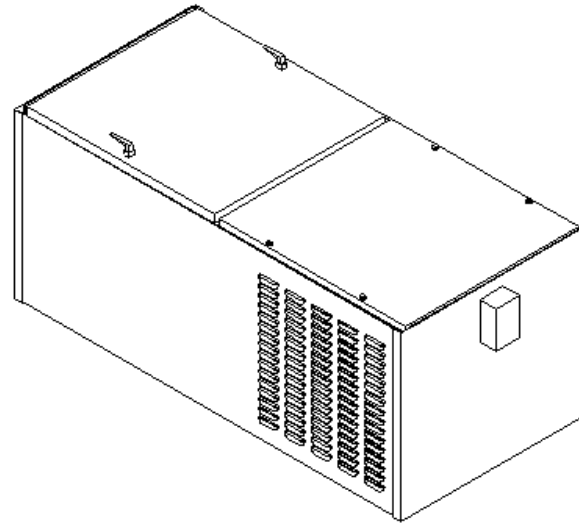


SPECIFICATIONS:



CONSTRUCTION: 16/18 Gauge welded steel cabinet with Powder-Coat finish. Unit includes a top filter access door, Ultra-Seal® filter mounting system, an acoustically lined blower cabinet with access panel, a bottom inlet collar, and a 10' power cord. Three phase units wired to a junction box; circuit and motor overload protection by others.

WEIGHT: 191 lbs.

AIRFLOW: 1000 CFM (1 HP), std.
500 CFM (1/2 HP), opt.

NOISE: 77.5 dBA (with after-filters)

ELECTRICAL: 1 HP 115/1/60, 12 amps, std.
 1 HP 208-230/460/3/60, 3.7-3.6/1.8 amps, opt.
 1/2 HP 115/1/60, 7.2 amps, opt.
 1/2 HP 208-230/460/3/60, 2.7-2.6/1.3 amps, opt.

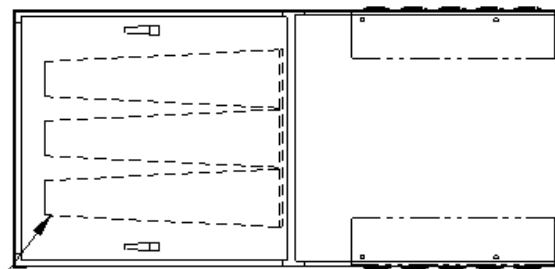
MAIN FILTERS: (3) MistPlus® II Filters, std.

AFTER FILTER OPTIONS: (2) 4" MERV 14, washable synthetic (17.50 L x 18.50 T x 4.0 D) STD.
 (2) 4" 99.97% HEPA, opt. (17.50 L x 18.50 T x 4.0 D)

OTHER OPTIONS: Pressure gauge kit indicates filter changes
 Optional side inlet (includes drain loop kit)

FIRE SUPPRESSION: Equipment provided by others

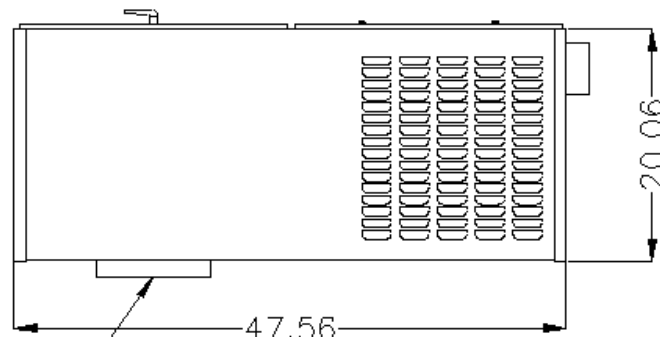
TOP VIEW



STD. FILTERS

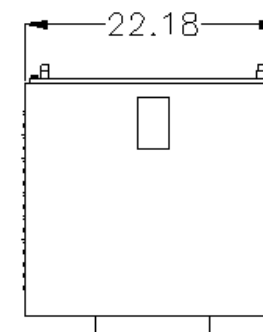
STD. MERV 14
AFTER-FILTERS
OPTIONAL HEPA
AFTER-FILTERS

FRONT VIEW

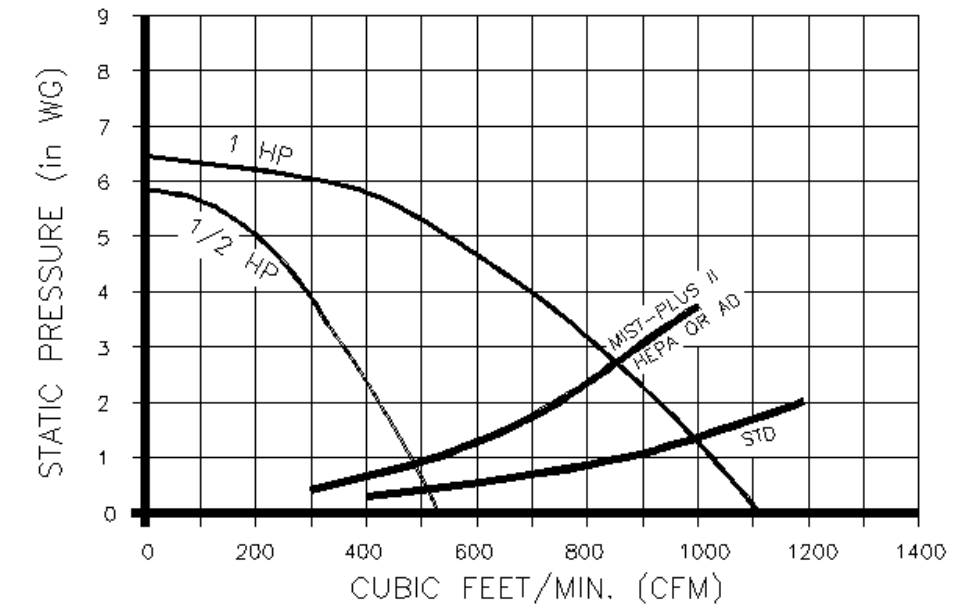


9.88" DIA.
INLET

SIDE VIEW



PERFORMANCE CURVES



11-04

| | |
|---------------------------|--|
| CUSTOMER: | |
| CUSTOMER P.O.: | |
| PROJECT: | |
| ENGINEER: | |
| SALES REP.: | |
| IDENTIFICATION / TAGGING: | |

> www.lev-co.com • 1.888.862.5356

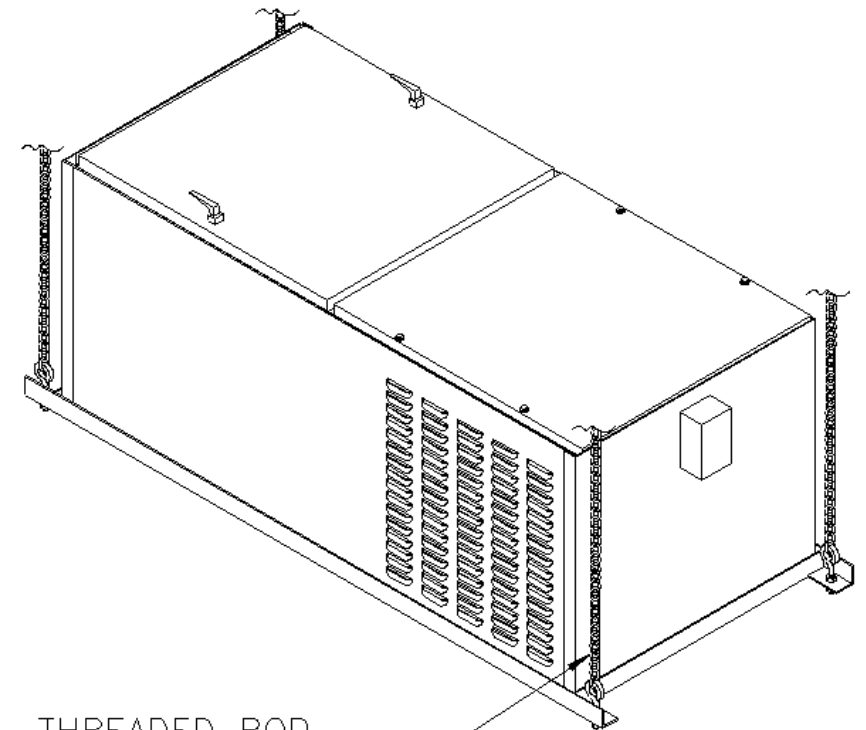
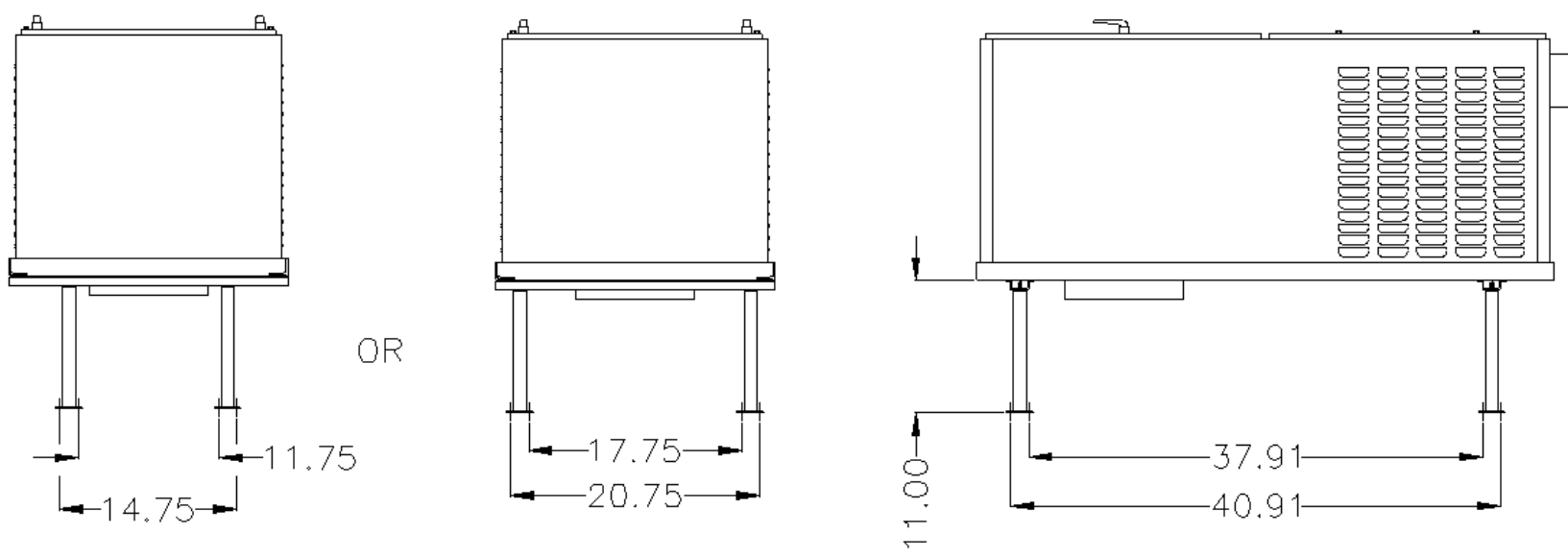


The device depicted and described hereon embodies proprietary information owned by the manufacturer. All design, manufacturing, reproduction, sales and patent rights regarding this device or drawing reserved except where explicit right is guaranteed in writing. We reserve the right to make design changes.

| | |
|-----------|-----------|
| Drawn by: | Janos B |
| Date: | 5/29/2010 |
| Scale: | NTS |
| Weight: | N/A |

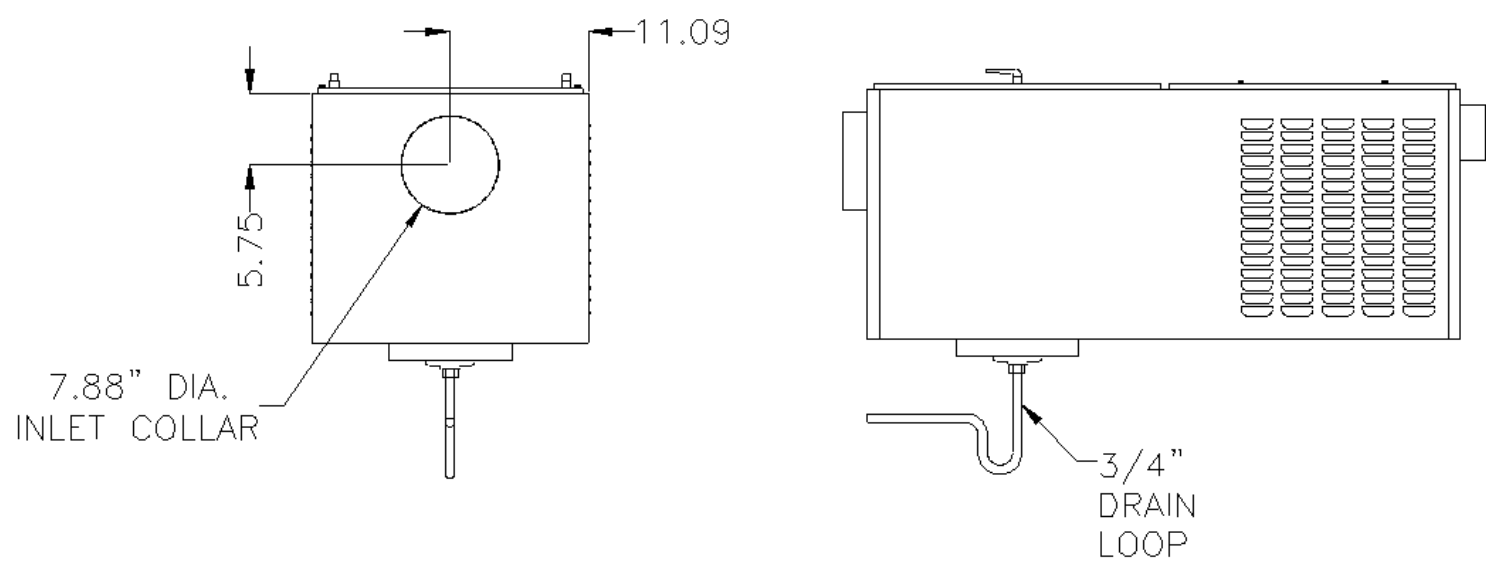
| | |
|--|--------------------------------|
| 11-04 MPH-10 MIST COLLECTOR | |
| Specification Drawing | |
| Drawing No.: | File Name: (11-04) MPH-10 - SD |
| Material: | Sheet: 1/3 |

LEG KIT OPTION

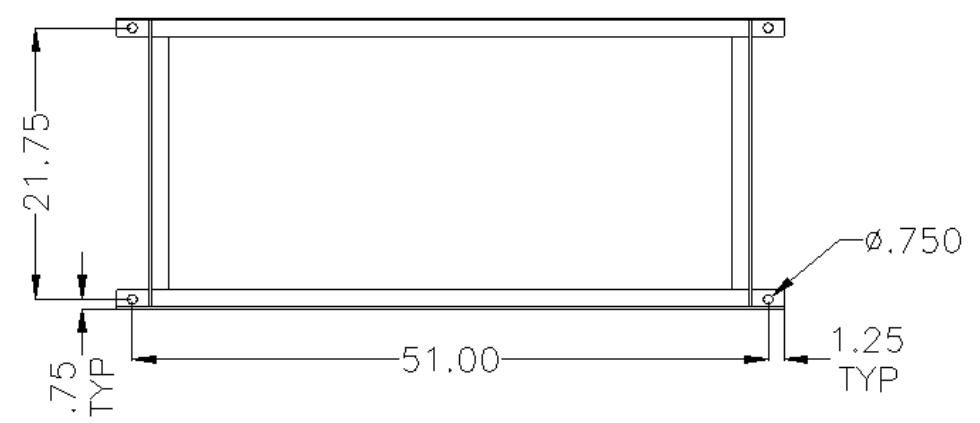


THREADED ROD
AND/OR CHAINS
AND EYEBOLTS
BY OTHERS

IA OPTION



SUSPENSION MOUNT OPTION



11-04

| | |
|---------------------------|--|
| CUSTOMER: | |
| CUSTOMER P.O.: | |
| PROJECT: | |
| ENGINEER: | |
| SALES REP.: | |
| IDENTIFICATION / TAGGING: | |

www.lev-co.com • 1.888.862.5356



The device depicted and described hereon embodies proprietary information owned by the manufacturer. All design, manufacturing, reproduction, sales and patent rights regarding this device or drawing reserved except where explicit right is guaranteed in writing. We reserve the right to make design changes.

| | |
|-----------|-----------|
| Drawn by: | Janos B |
| Date: | 5/29/2010 |
| Scale: | NTS |
| Weight: | N/A |

| | |
|--|---------------------|
| 11-04 MPH-10 MIST COLLECTOR | |
| Specification Drawing | |
| Drawing No.: | - |
| File Name: | (11-04) MPH-10 - SD |
| Material: | - |
| Sheet: | 2/3 |

MODELS & OPTIONS

| Part # | Description |
|--|--|
| Main System / Part | |
| <input type="checkbox"/> MPH 10 | 1000 cfm source capture mist collector with (3) MIST-PLUS II main filter with (2) MERV14 pleated synthetic, washable filters (17.5" x 18.5" x 3.75"). 1 HP 115/1/60 Hz 77.5 dBA, with rubber vibration insulator, with a 10" collar on bottom |
| <input type="checkbox"/> MPH10-1 | 500 cfm source capture mist collector with (3) MIST-PLUS II main filter with (2) MERV14 pleated synthetic, washable filters (17.5" x 18.5" x 3.75"). 1/2 HP 115/1/60 Hz 77.5 dBA, with rubber vibration insulator, with a 10" collar on bottom |
| <input type="checkbox"/> MPH10-3 | 1000 cfm source capture mist collector with (3) MIST-PLUS II main filter with (2) MERV14 pleated synthetic, washable filters. 1 Hp 208-230/460/3/60 Hz 77.5 dBA, with rubber vibration insulator, with a 10" collar on bottom |

Fan / Motor Upgrades or Options (when ordering main unit)

- [MPH 10-1/2HP](#) 1/2 Hp, 115/1/60 Hz motor in place of 1 HP 115/1/60 Hz (500 cfm).

Replacement filters - (Quantity discounts available upon request)

- [7FJ9-9004](#) HEPA, 99.97% @0.3 micron filter
- [7FP14502](#) Filter pleated. (18" x 19" x 3.75"). MERV 14 efficiency. Synthetic, Washable. (2) required.
- [MPH 10-HEPA](#) (2) Internal 99.97% HEPA filter. (17.5"x18.5"x4") In addition to main MIST-PLUS II filters
- [PRO 1-2AF7-4000](#) 97% MIST-PLUS II filter, metal frame (3) required.

Preventative Maintenance Pressure Gauges, etc. (when ordering main unit)

- [MPH 10-PG-5](#) 0-5" Minihelic dial pressure gauge for MPH10. Specify Location or it will ship loose.
- [MPH 10-PG-6](#) 0-6" Minihelic dial pressure gauge for MPH10. Specify Location or it will ship loose.

11-04

CUSTOMER:
 CUSTOMER P.O.:
 PROJECT:
 ENGINEER:
 SALES REP.:
 IDENTIFICATION / TAGGING:



The device depicted and described hereon embodies proprietary information owned by the manufacturer. All design, manufacturing, reproduction, sales and patent rights regarding this device or drawing reserved except where explicit right is guaranteed in writing. We reserve the right to make design changes.

Drawn by: Janos B
 Date: 5/29/2010
 Scale: NTS
 Weight: N/A

**11-04 MPH-10
 MIST COLLECTOR**
 Specification Drawing

Drawing No.: -
 Material: -
 File Name: (11-04) MPH-10 - SD
 Sheet: 3/3