

CONSTRUCTION:

12 Gauge steel cabinet finished with a 2 part chemical and oil resistant paint. Includes hopper and stand, removable endcaps for easy access to filters, pressure gauge to indicate filter changes, and automatic cleaning. Also included is a direct drive radial motor/blower assembly. Motor starters/disconnects NOT INCLUDED.

AIRFLOW:

See chart below

WEIGHT:

See chart "A"

ELECTRICAL:

- 5 HP 208/230/460/3/60, 12.0/6.0 amps, radial blower, std.
- 3 HP 208/230/460/3/60, 8.0/4.0 amps, radial blower, opt.
- 5 HP 208/230/460/3/60, 12.0/6.0 amps, BI blower, opt.
- 7.5 HP 208/230/460/3/60, 17.2/8.6 amps, BI blower, opt.
- 10 HP 208/230/460/3/60, 24/12amps, BI blower, opt.

FIRE SUPPRESSION:

Equipment provided by others.

SPECIAL NOTES:

Compressed air filter provided by others.

SPECIFICATIONS:

MAIN FILTERS:

- (8)16"Diameter cartridges, CLEAN 2, std.
- (8)16"Diameter cartridges, FiberDust, opt.

HEPA OPTION:

- External HEPA filter, 99.97% (2000 CFM)
- External HEPA filter, 99.97% (4000 CFM)

AD OPTION:

- (2) External adsorbers, 50 lbs., refillable, followed by a 2" poly afterfilter (2000 CFM)
- (2) External adsorbers, 50 lbs., refillable, followed by a 2" poly afterfilter (4000 CFM)

OTHER OPTIONS:

- 55 Gallon Ild/hose
- 5 Gallon hopper
- Slide gate
- 20 Gallon hopper
- 50 Hz
- 575 Volt
- Single phase
- Silencer
- Raincap

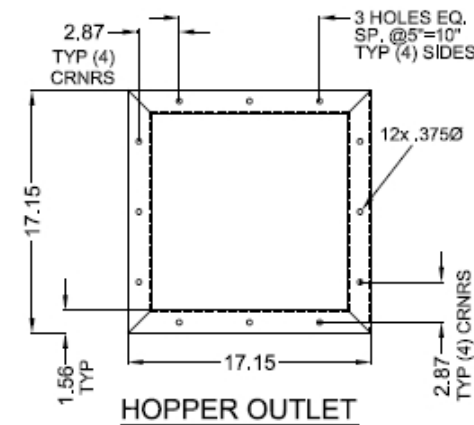
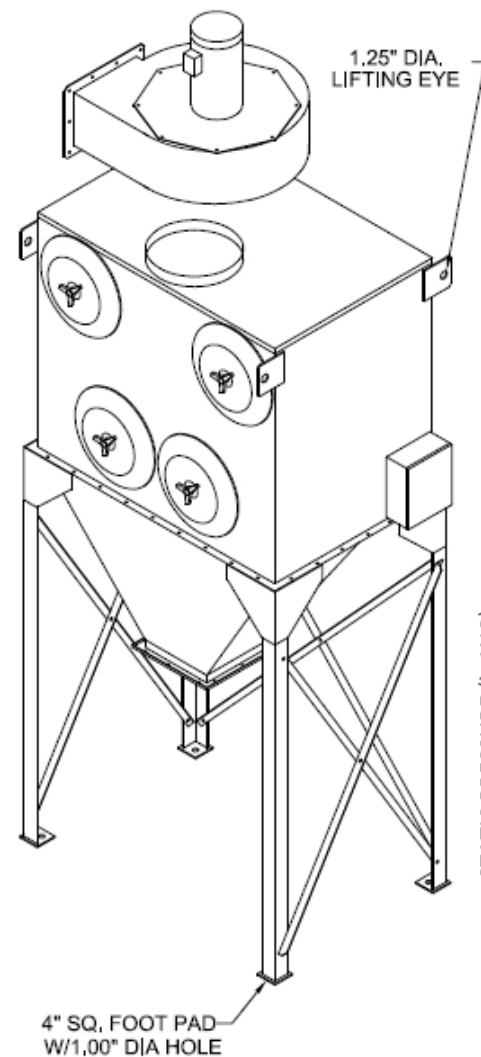
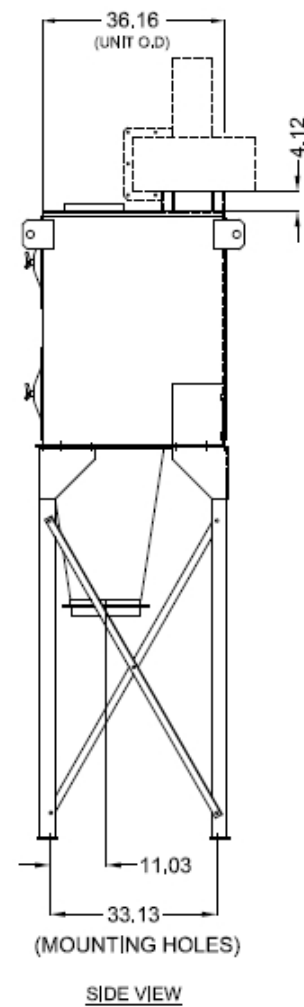
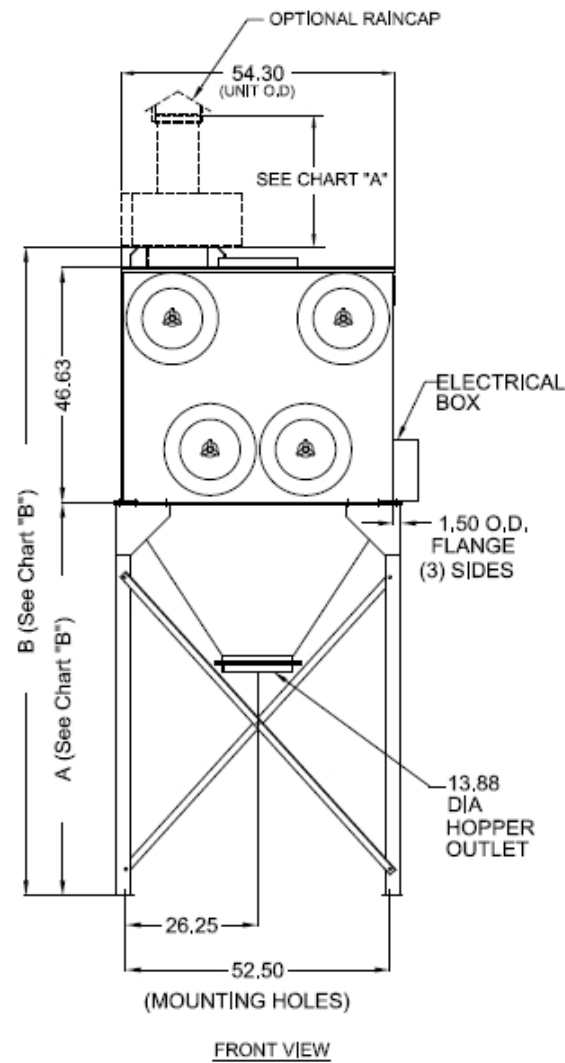
* AFS FILTER EFFICIENCIES BASED ON ASHRAE 52-76 TEST METHOD

CHART "B"

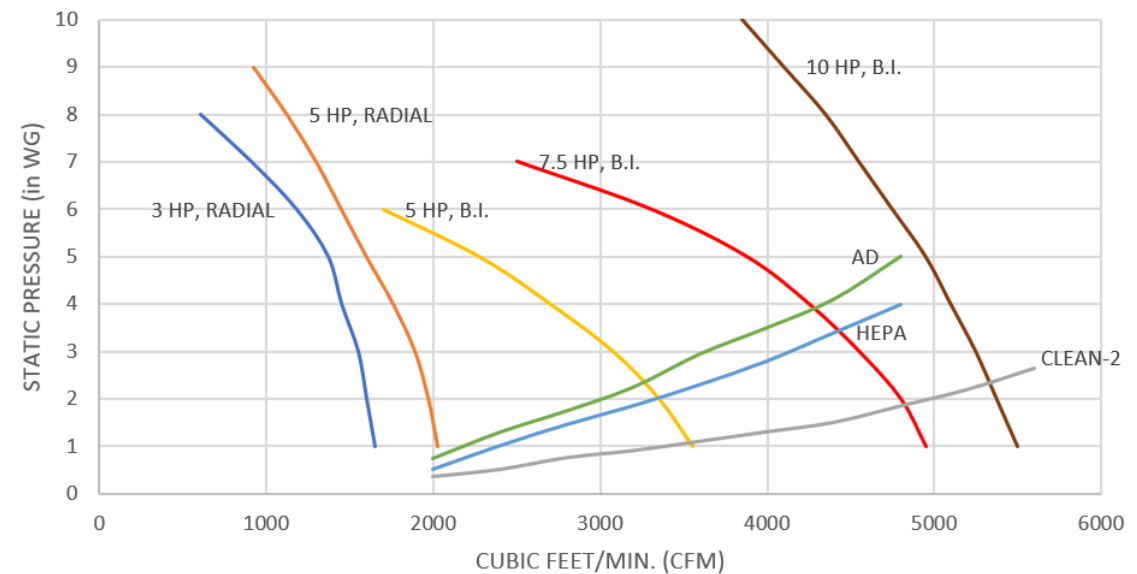
HOPPER SIZE	A	B
5/20 Gal.	54	104.75
55 Gal.	78	128.75

CHART "A"

MOTOR/BLOWER OPTION	MTR/BLWR HEIGHT	dBA	dBA WITH SILENCER
3 HP, RADIAL	15.00"	90	78
5 HP, RADIAL	19.50"	95	80
5 HP, BI	23.38"	84	75
7.5 HP, BI	26.25"	84	75
10 HP, BI	26.00"	95	80



Performance Curves (DC-8)



04-04

CUSTOMER:
 CUSTOMER P.O.:
 PROJECT:
 ENGINEER:
 SALES REP.:
 IDENTIFICATION / TAGGING:

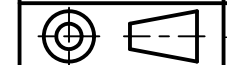
> www.lev-co.com • 1.888.862.5356

lev-co

The device depicted and described hereon embodies proprietary information owned by the manufacturer. All design, manufacturing, reproduction, sales and patent rights regarding this device or drawing reserved except where explicit right is guaranteed in writing. We reserve the right to make design changes.

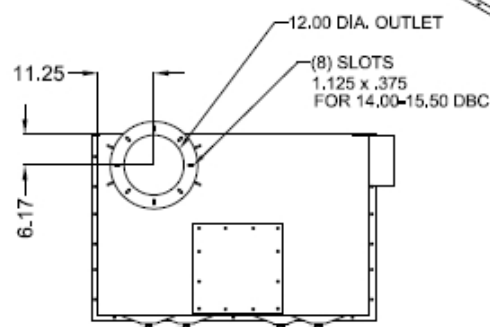
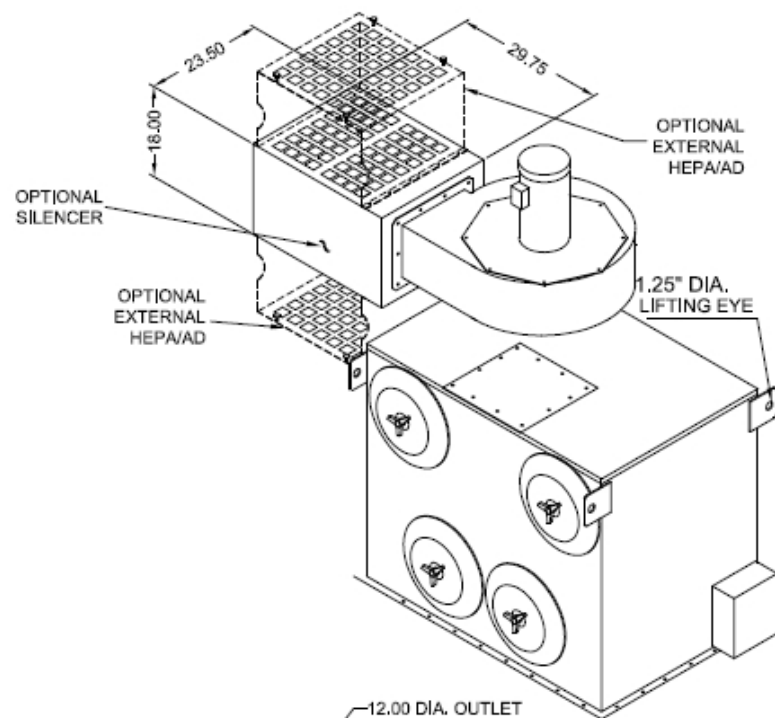
Drawn by: Janos B
 Date: 5/1/2008
 Scale: NTS
 Weight: N/A

04-04 DC-8
CARTRIDGES DUST COLLECTOR
 Specification Drawing

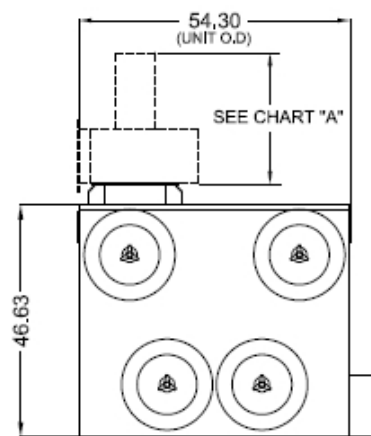


Drawing No.: - File Name: (04-04) DC-8 - SD

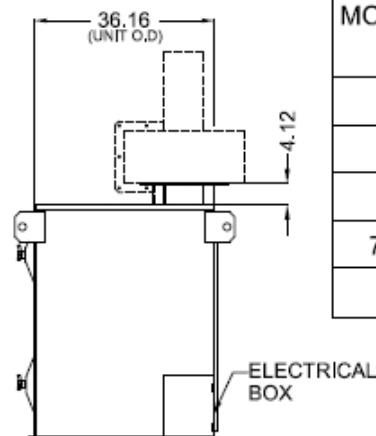
Material: Product manufactured by: Sheet: 1/2



TOP VIEW



FRONT VIEW



SIDE VIEW

SPECIFICATIONS:

CONSTRUCTION:

12 Gauge steel cabinet finished with a 2 part chemical and oil resistant paint. Includes removable endcaps for easy access to filters, pressure gauge to indicate filter changes, and automatic cleaning. Also included is a direct drive radial motor/blower assembly. Motor starters/disconnects NOT INCLUDED.

WEIGHT:

1224 lbs.

AIRFLOW:

See chart below

NOISE:

See chart "A"

ELECTRICAL:

- 5 HP 208/230/460/3/60, 12.0/6.0 amps, radial blower, std.
- 3 HP 208/230/460/3/60, 8.0/4.0 amps, radial blower, opt.
- 5 HP 208/230/460/3/60, 12.0/6.0 amps, BI blower, opt.
- 7.5 HP 208/230/460/3/60, 17.2/8.6 amps, BI blower, opt.
- 10 HP 208/230/460/3/60, 24/12 amps, BI blower, opt.

FIRE SUPPRESSION:

Equipment provided by others.

SPECIAL NOTES:

Compressed air filter provided by others.

MAIN FILTERS:

- (8) 16" Diameter cartridges, CLEAN 2, std.
- (8) 16" Diameter cartridges, FiberDust, opt.

HEPA OPTION:

- External HEPA filter, 99.97% (2000 CFM)
- External HEPA filter, 99.97% (4000 CFM)

AD OPTION:

- (2) External adsorbers, 50 lbs., refillable, followed by a 2' poly afterfilter (2000 CFM)
- (2) External adsorbers, 50 lbs., refillable, followed by a 2' poly afterfilter (4000 CFM)

OTHER OPTIONS:

- 60 Hz
- 575 Volt
- Single phase
- Silencer
- Raincap

* AFS FILTER EFFICIENCIES BASED ON ASHRAE 52-76 TEST METHOD

MOTOR/BLOWER OPTION	"wg EXTERNAL ADDED STATIC									
	1	2	3	4	5	6	7	8	9	10
3 HP, RADIAL	1650	1600	1550	1450	1370	1180	910	605	—	—
5 HP, RADIAL	2025	1970	1890	1760	1600	1450	1300	1125	925	—
5 HP, BI	3550	3350	3075	2700	2275	1700	—	—	—	—
7.5 HP, BI	4950	4800	4550	4250	3875	3300	2500	—	—	—
10 HP, BI	5500	5375	5250	5100	4950	4750	4550	4350	4100	3850

CUBIC FEET PER MINUTE (CFM)

MODELS & OPTIONS:

Part # Description

Main System / Part

- DC-8 Cartridge dust collector with (8) Clean 2® filters, front load, 5 HP motor/blower with AMCA Type B spark resistant aluminum blower wheel, and auto clean Vibra-Pulse® cleaning system with 1/2" regulator. Motor starters not included

Fan / Motor Upgrades or Options (when ordering main unit)

- DC-8-10HP-BI 10HP BI Blower Option for Standard DC-8 Unit
- DC-8-5HP-BI 5HP BI Blower Option for Standard DC-8 Unit
- DC-8-7.5HP-BI 7.5HP BI Blower Option for Standard DC-8 Unit
- DC-8-BIN VENT Filter Unit w/3HP Blower (less dust tray) Option for Standard DC-8 Unit
- DC-8-DEL Delete 3HP Blower from Standard Units (add nothing) Option for Standard DC-8 Unit

Filter Options (when ordering main unit)

- DC-8-EXT-AD2 External AD-2000 CFM (Includes Silencer) Option for Standard DC-8 Unit
- DC-8-EXT-AD4 External AD-4000 CFM (Includes Silencer) Option for Standard DC-8 Unit
- DC-8-EXT-HE2 External Hepa-2000 CFM (Includes Silencer) Option for Standard DC-8 Unit
- DC-8-EXT-HE4 External Hepa-4000 CFM (Includes Silencer) Option for Standard DC-6 Unit
- DC-8-FD FiberDust Cartridge Filter Option for Standard DC-8 Unit
- DC-8-HYD-045 Hydro-filter designed to help eliminate sparks. C/w 45 gallon drum, easy to remove lid, water level gauge, and all required ductwork

Preventative Maintenance Pressure Gauges, etc. (when ordering main unit)

- DC-8-PG-10 0-10" magna-helic pressure gauge, approximately 5" diameter size. Surface mounted.

Misc. Options

- DC-8-HOPPER-20 20 Gal. Hopper Option for Standard DC-8 Unit
- DC-8-HOPPER-5 5 Gal. Hopper Option for Standard DC-8 Unit
- DC-8-M/C-8 Manual Vibra Clean System Option for Standard DC-8 Unit
- DC-8-BLOCK OFF Block Off Components Option for Standard DC-8 Unit (required for on-line cleaning)
- DC-8-CASTERS Fixed & Swivel Casters Option for DC-8 Hopper-5 & Hopper-20 Units only
- DC-8-CHK DAMPER Inlet Check Damper Option for Standard DC-8 Unit
- DC-8-EXP VENT Explosion Vent Door Option for Standard DC-8 Unit
- DRUM-45 45 imperial gallon (55 US gallons) steel drum c/w lid.

Sound Attenuation

- DC-8-S-BI 5 & 7.5HP BI Blower Silencer Option for Standard DC-8 Unit
- DC-8-S-RAD 3 & 5HP Radial Silencer Option for Standard DC-8 Unit

Installation Option & Accessories

- DC-8-GATE Slide Gate Option for Standard DC-8 Unit
- DC-8-RS Rain Shield Kit Option for Standard DC-8 Unit

04-04

CUSTOMER:
 CUSTOMER P.O.:
 PROJECT:
 ENGINEER:
 SALES REP.:
 IDENTIFICATION / TAGGING:

www.lev-co.com • 1.888.862.5356



The device depicted and described hereon embodies proprietary information owned by the manufacturer. All design, manufacturing, reproduction, sales and patent rights regarding this device or drawing reserved except where explicit right is guaranteed in writing. We reserve the right to make design changes.

Drawn by: Janos B
 Date: 5/1/2008
 Scale: NTS
 Weight: N/A

04-04 DC-8

CARTRIDGES DUST COLLECTOR

Specification Drawing

Drawing No.: - File Name: (04-04) DC-8 - SD
 Material: Product manufactured by: **Airflow SYSTEMS INC.** Sheet: 2/2